

97 Greenwich Avenue Landmarks Preservation Commission

10 JANUARY 2019

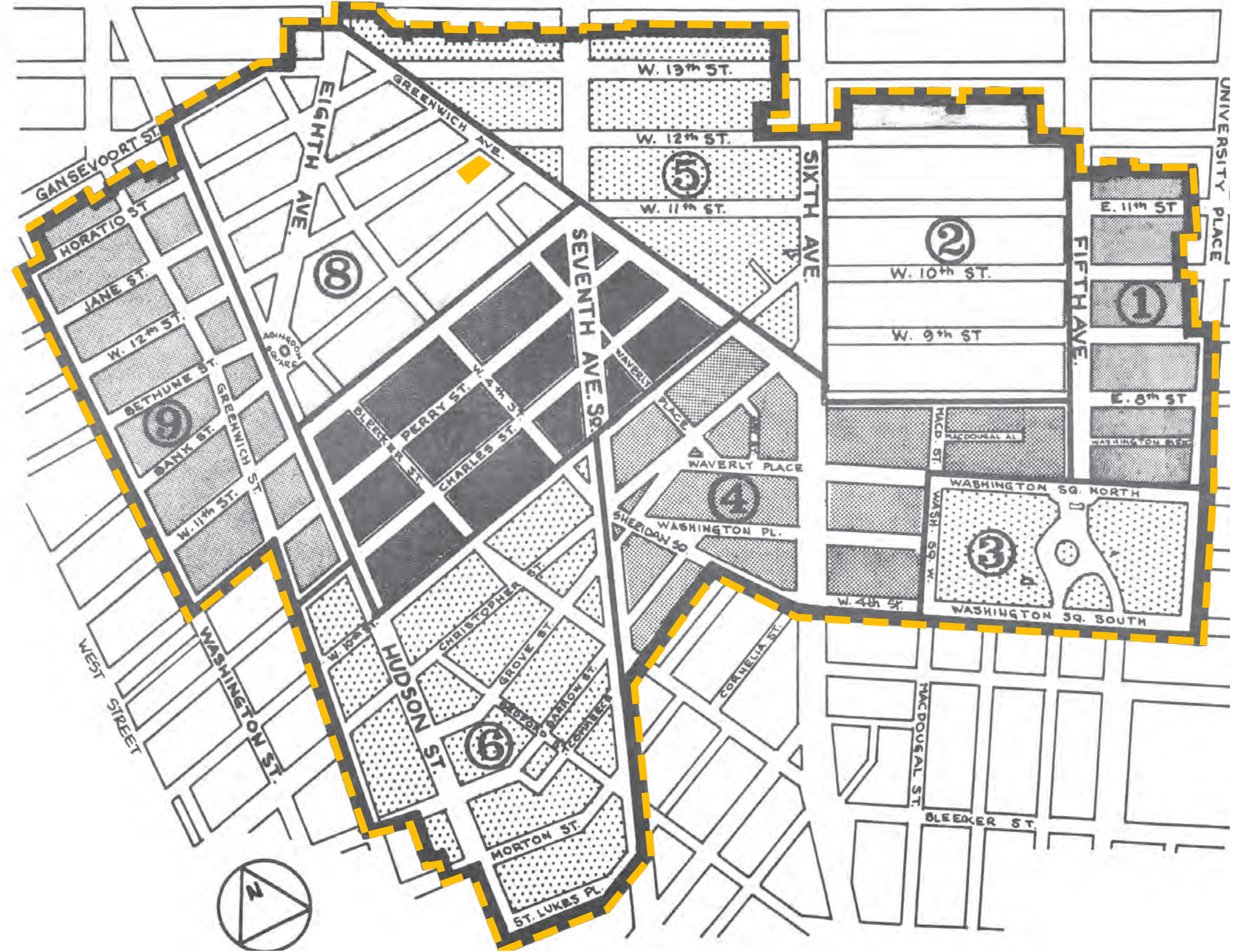


PROJECT DESCRIPTION



- > REPLACE GROUND FLOOR STOREFRONT, AND RELOCATE MAIN ENTRY DOORS AND VESTIBULE
- > REMOVE EXISTING CANOPY AND PROVIDE NEW AWNING
- > REPLACE EXISTING SIGNAGE
- > PAINT EXISTING METALWORK, INCLUDING MULLIONS AND STEEL MEMBERS

**GREENWICH VILLAGE
HISTORIC DISTRICT
MANHATTAN**

The following document has been compiled for LPC staff-level approval; regarding the tenant improvement on 97 Greenwich Ave, Equinox Fitness Club. All information has been provided in response to LPC's application checklists for Storefronts, Signage and Awning Installation.



KEY

-  97 GREENWICH AVE
-  GREENWICH VILLAGE HISTORIC DISTRICT BOUNDARY (DESIGNATED: 1969)



GREENWICH AVENUE - EAST STREET ELEVATION



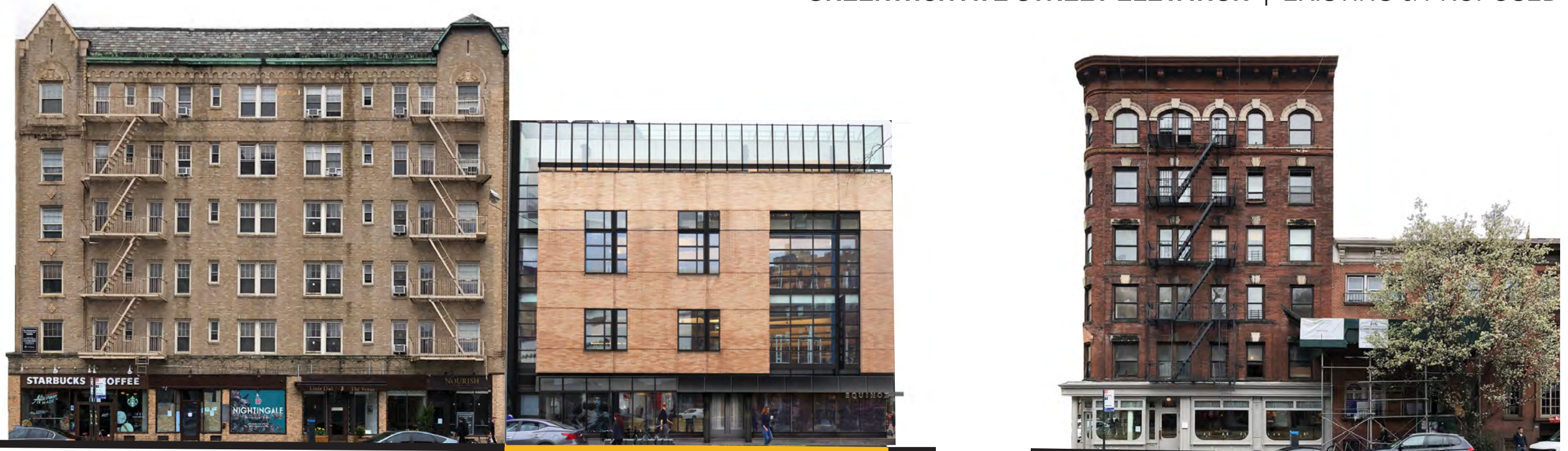
GREENWICH AVENUE - WEST STREET ELEVATION WITH PROPOSED BUILDING



WEST 12TH STREET ELEVATION - NORTH STREET ELEVATION



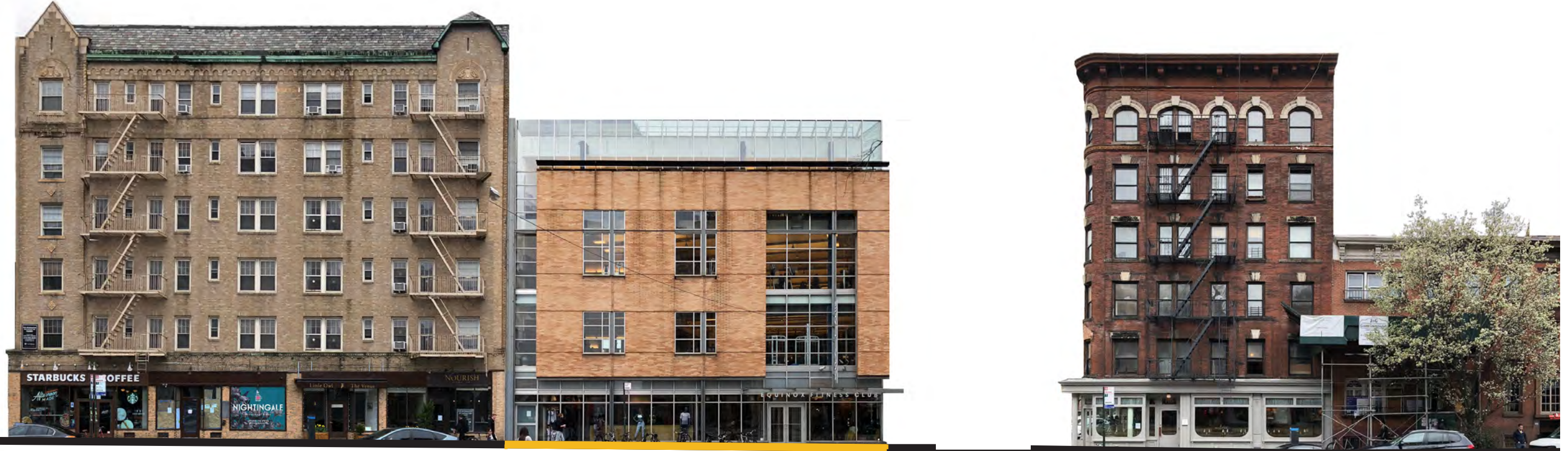
WEST 12TH STREET ELEVATION - SOUTH STREET ELEVATION WITH PROPOSED BUILDING FACADE



BANK ST
GREENWICH AVENUE - PROPOSED

97 GREENWICH AVENUE

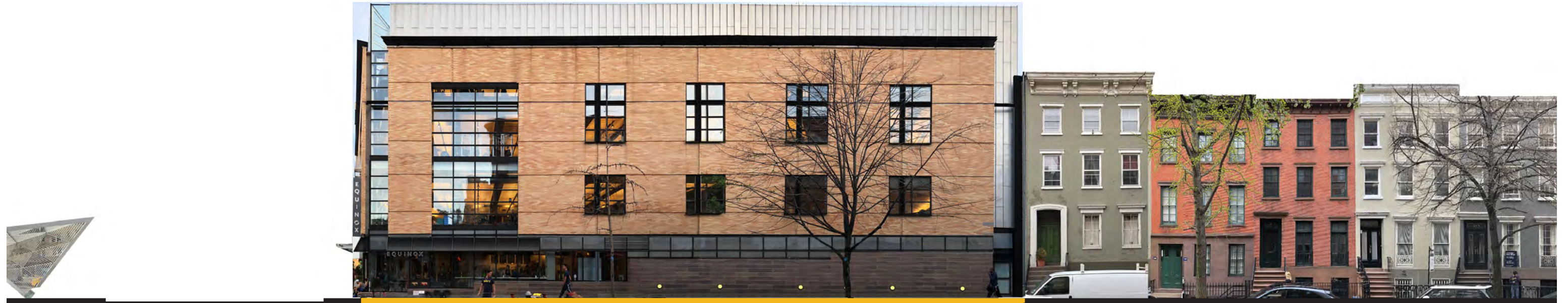
W 12TH STREET



BANK ST
GREENWICH AVENUE - EXISTING

97 GREENWICH AVENUE

W 12TH STREET



GREENWICH AVENUE

97 GREENWICH AVENUE

WEST 12TH STREET ELEVATION - PROPOSED



GREENWICH AVENUE

97 GREENWICH AVENUE

WEST 12TH STREET ELEVATION - EXISTING



GREENWICH AVENUE - PROPOSED



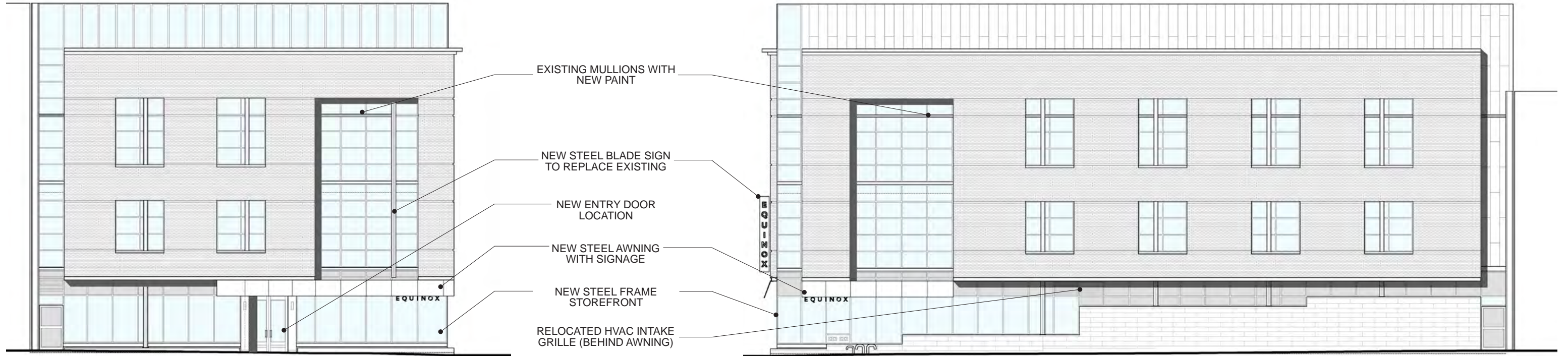
WEST 12TH STREET ELEVATION - PROPOSED



GREENWICH AVENUE - EXISTING

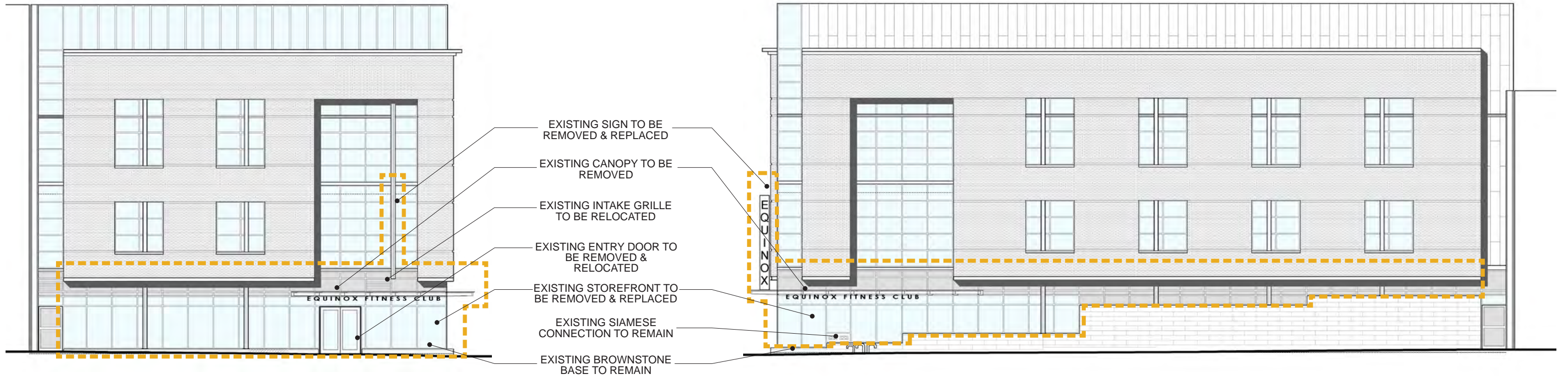


WEST 12TH STREET ELEVATION - EXISTING



GREENWICH AVENUE - PROPOSED

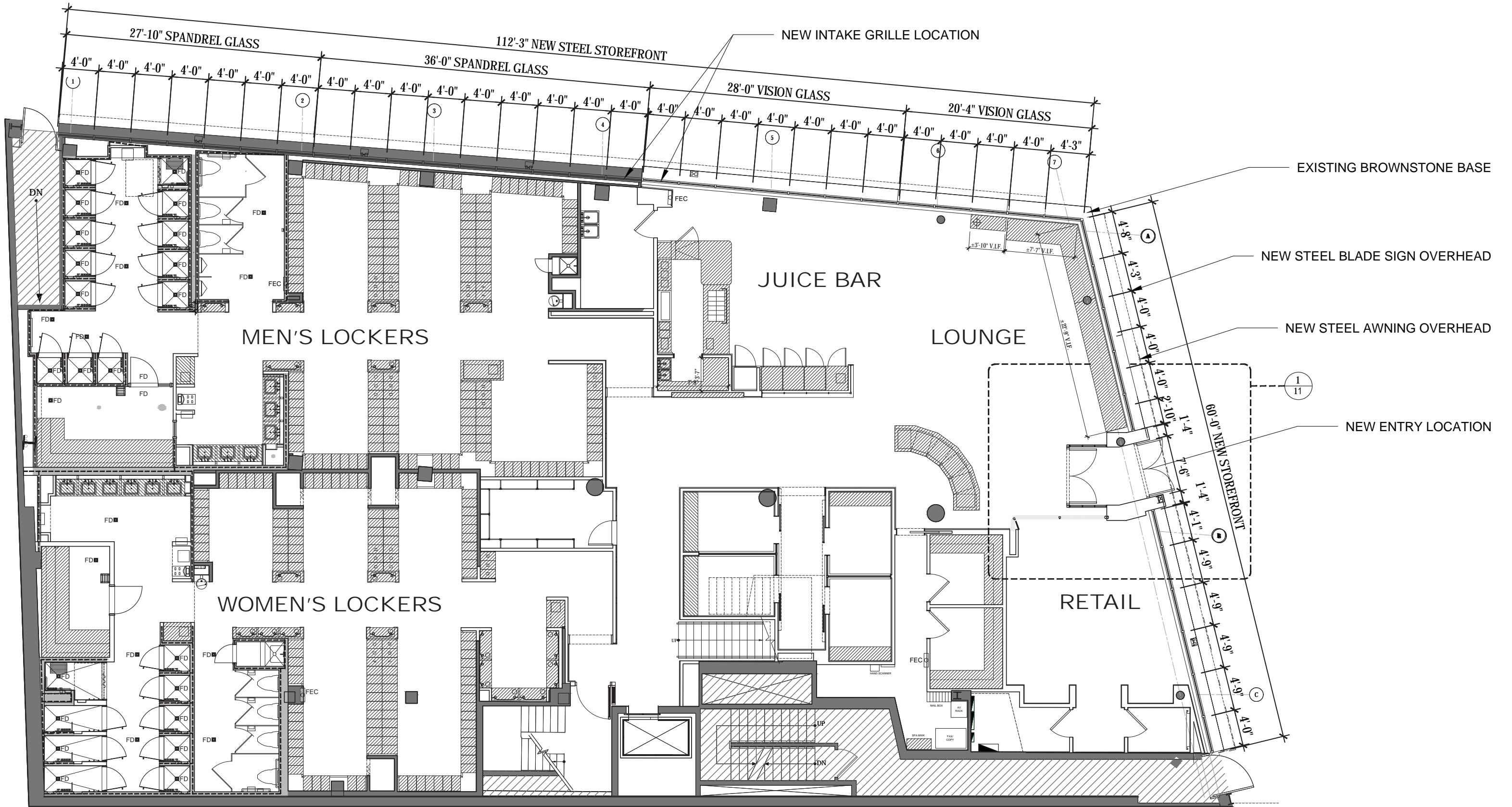
WEST 12TH STREET ELEVATION - PROPOSED



GREENWICH AVENUE - EXISTING

WEST 12TH STREET ELEVATION - EXISTING







GREENWICH AVE. ENTRANCE - EXISTING



GREENWICH AVE. ENTRANCE - PROPOSED RENDERING

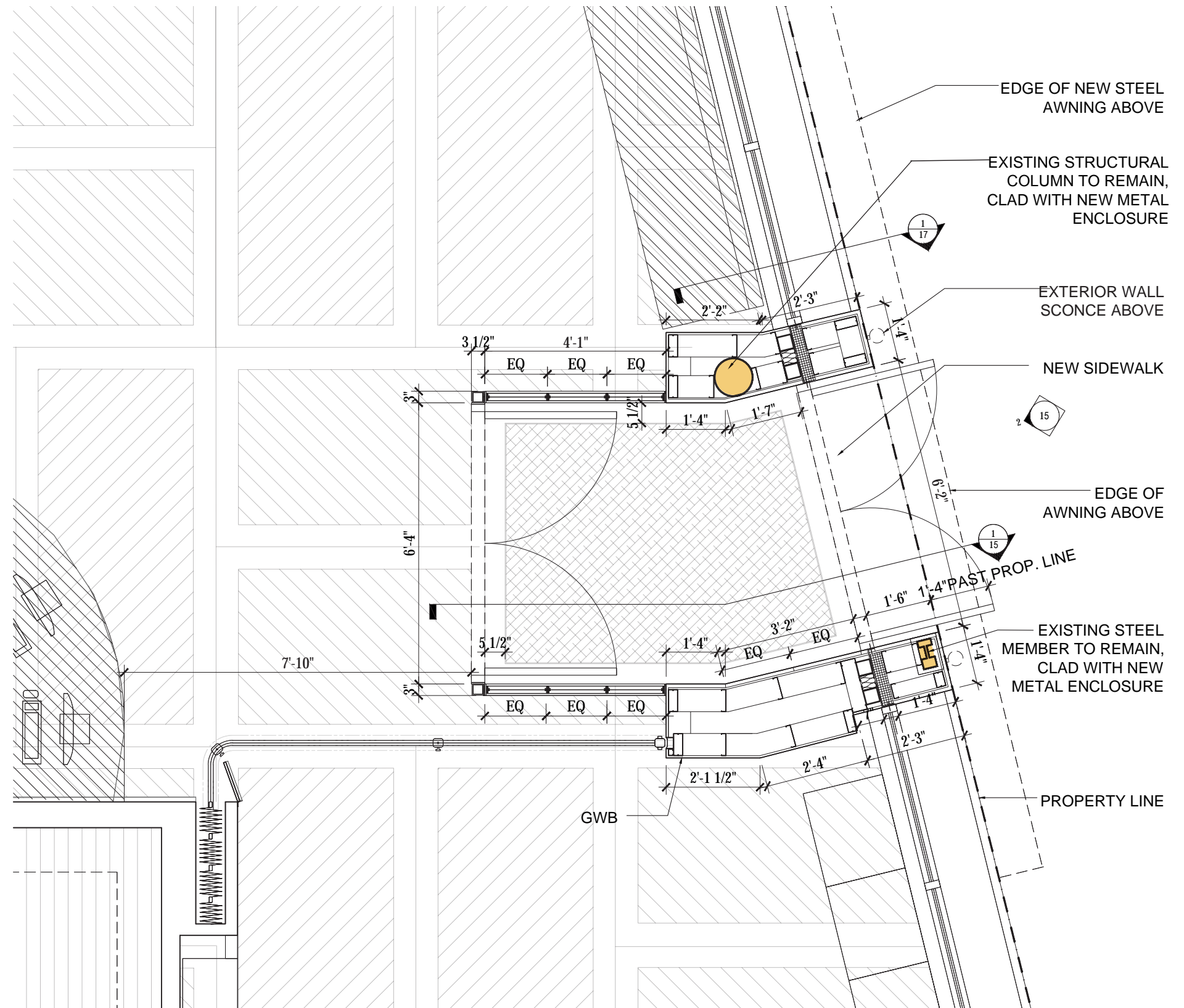
ENTRY VESTIBULE DETAILS



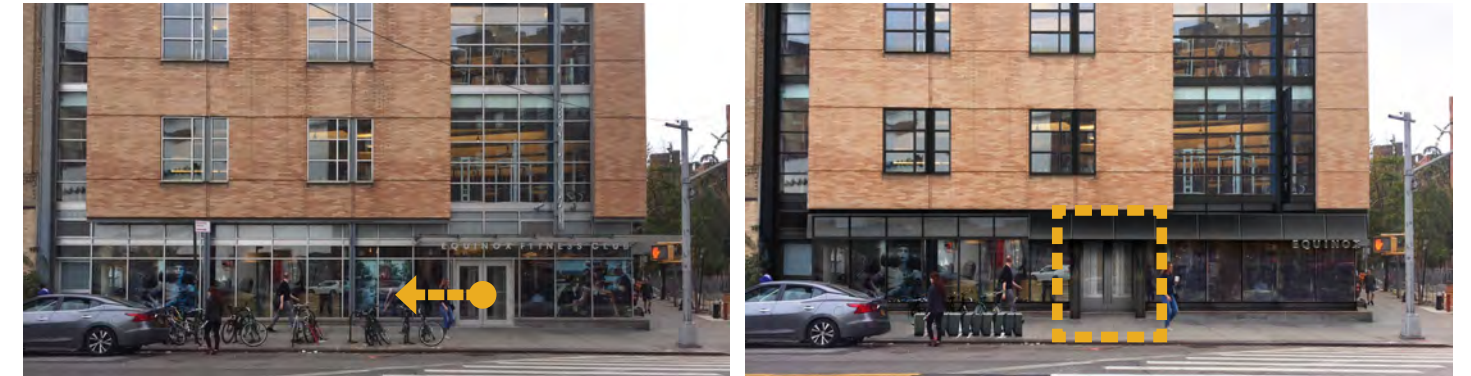
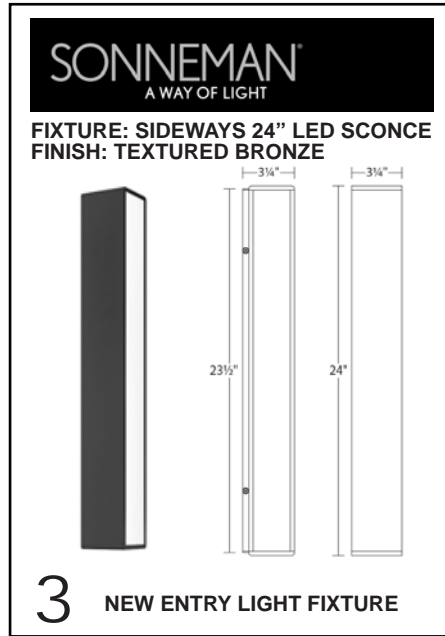
KEY PLAN



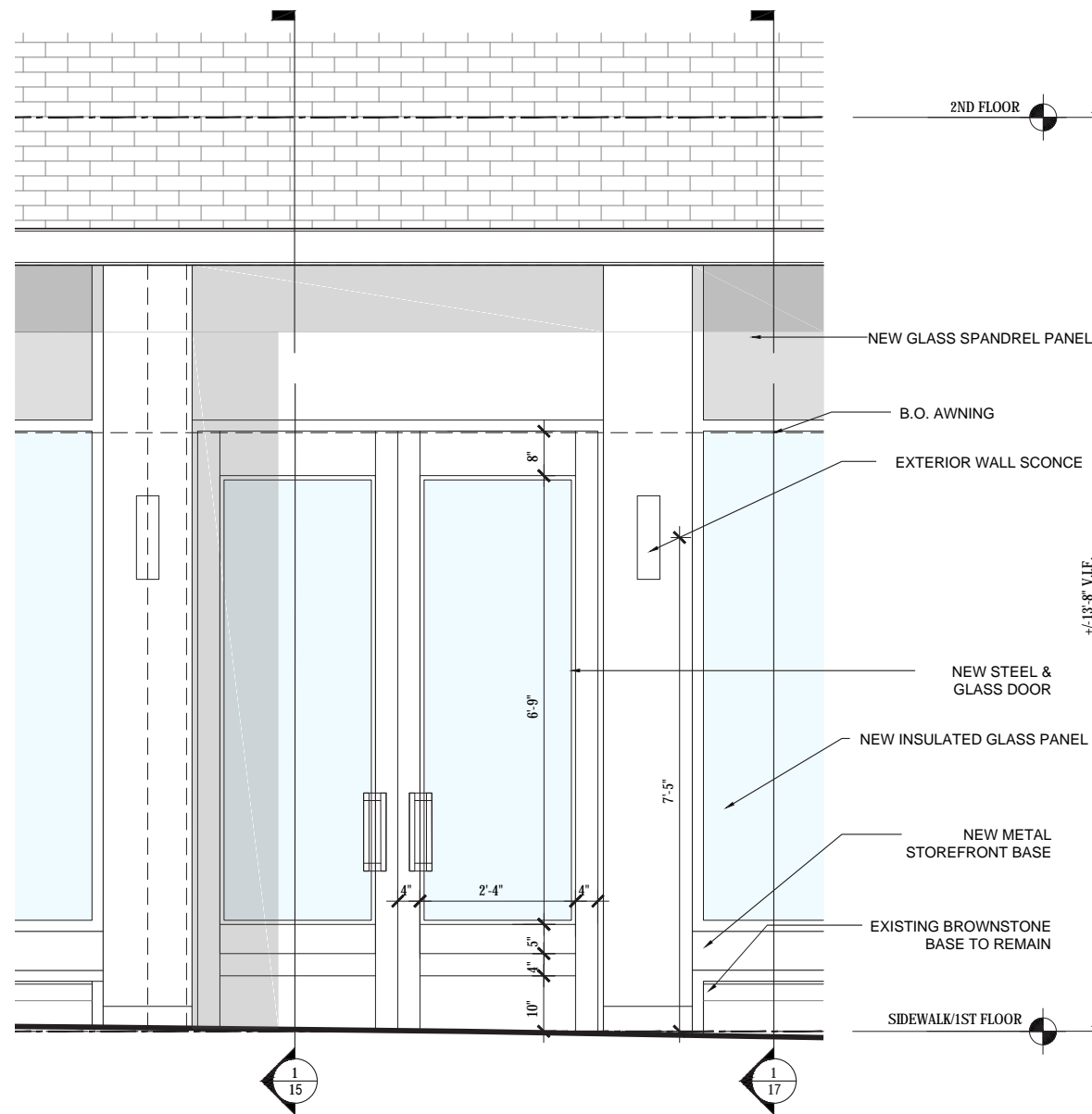
ENTRY DOOR PRECEDENT



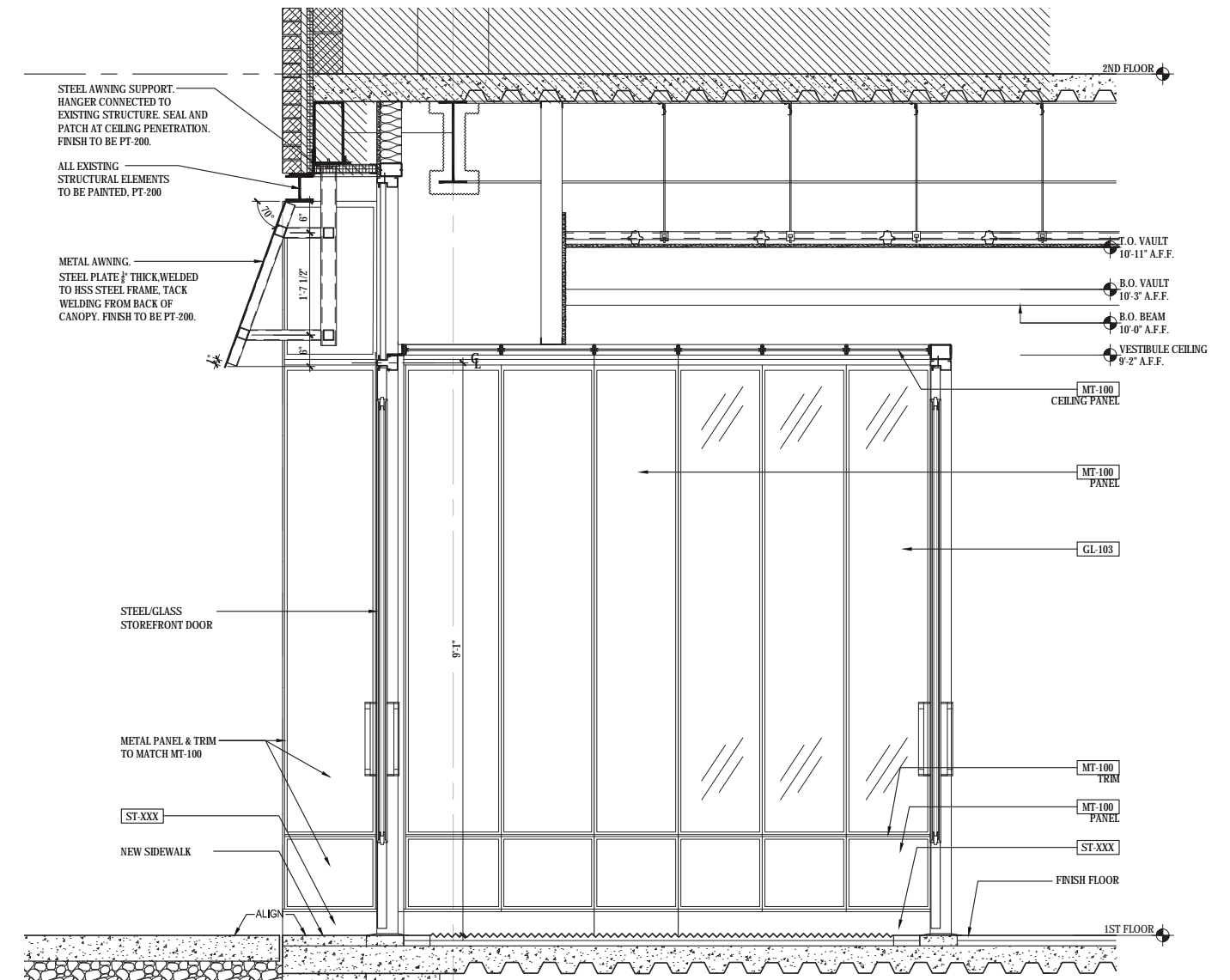
1 ENLARGED PLAN @ ENTRY VESTIBULE
SCALE: 3/8" = 1'-0"



KEY ELEVATION [EXISTING VS. PROPOSED]



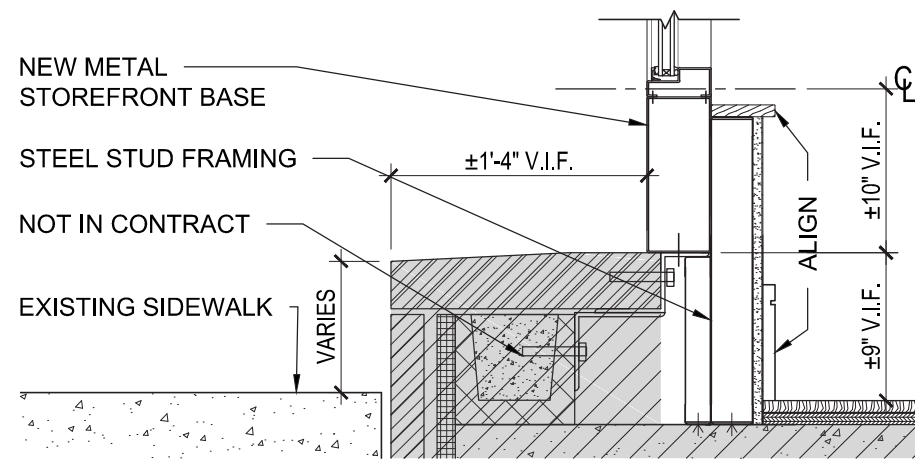
2 PARTIAL ELEVATION @ ENTRY DOOR
SCALE: 3/8" = 1'-0"



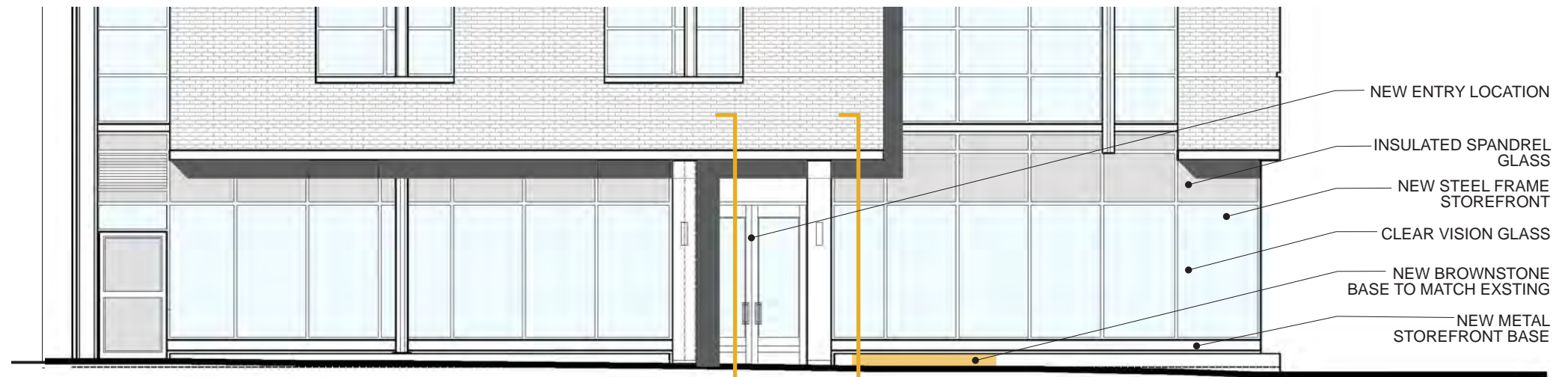
1 WALL SECTION @ ENTRY VESTIBULE
SCALE: 3/8" = 1'-0"



KEY PLAN

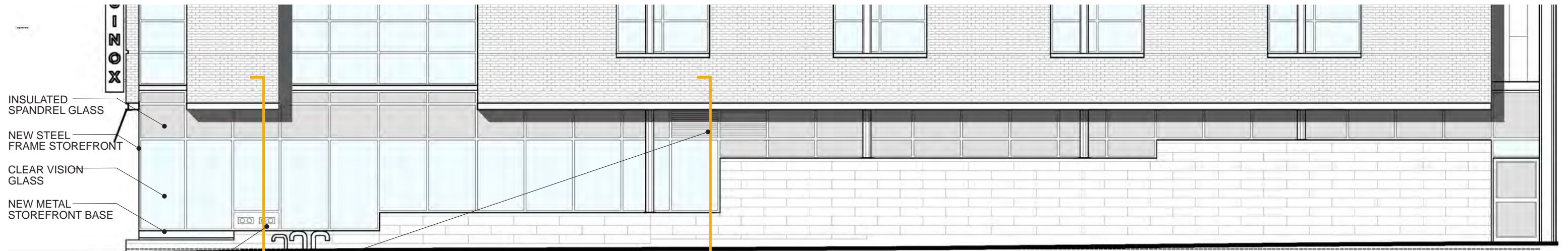


3 WALL SECTION DETAIL @ STOREFRONT SILL
 SCALE: 1" = 1'-0"



1/15 1/17

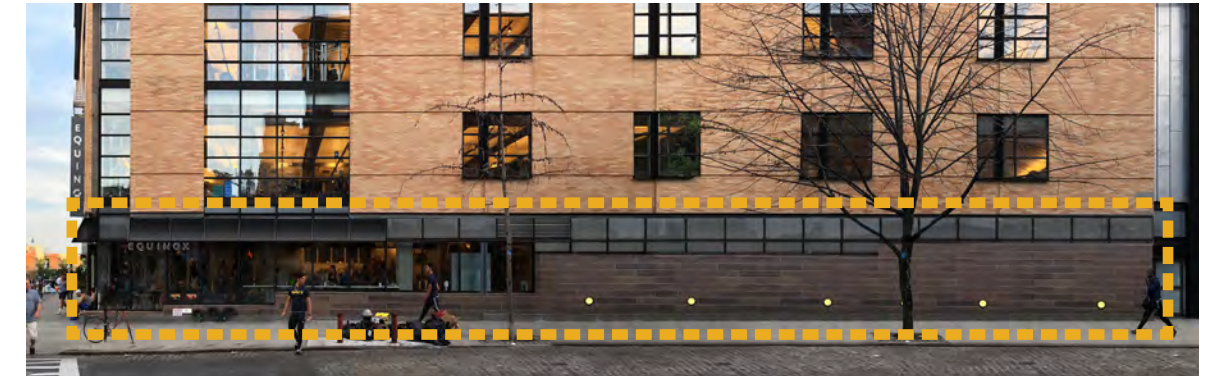
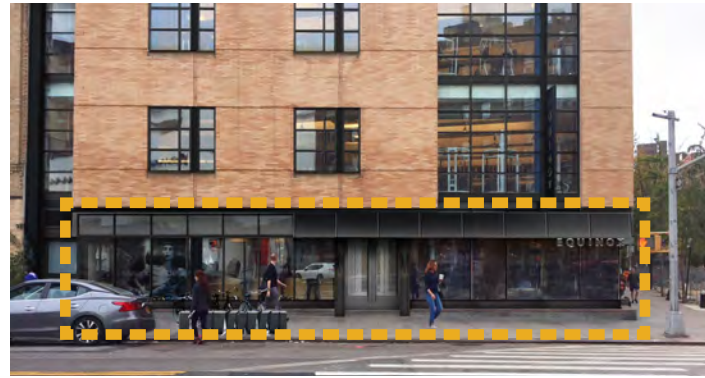
2 PARTIAL ELEVATION @ GREENWICH AVE WITHOUT AWNING
 SCALE: 1/8" = 1'-0"



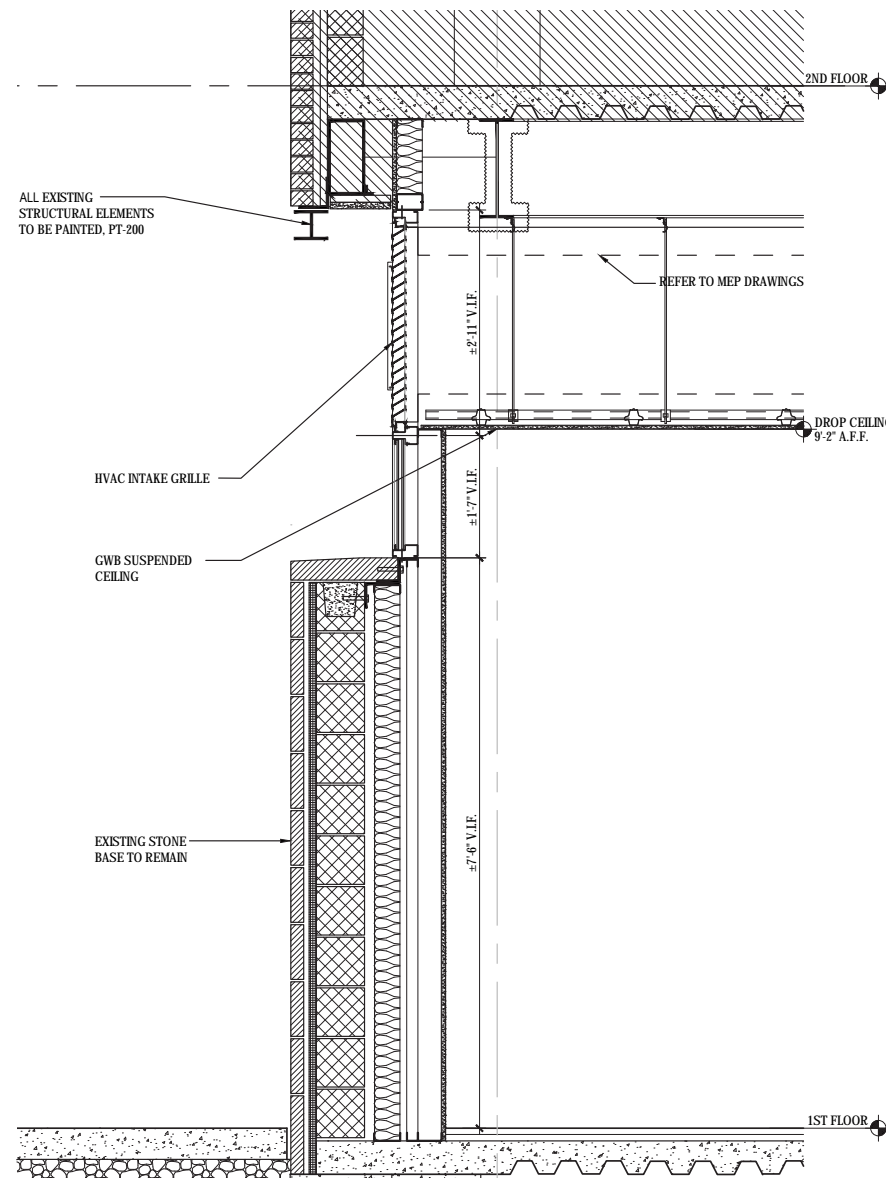
2/17

3/17

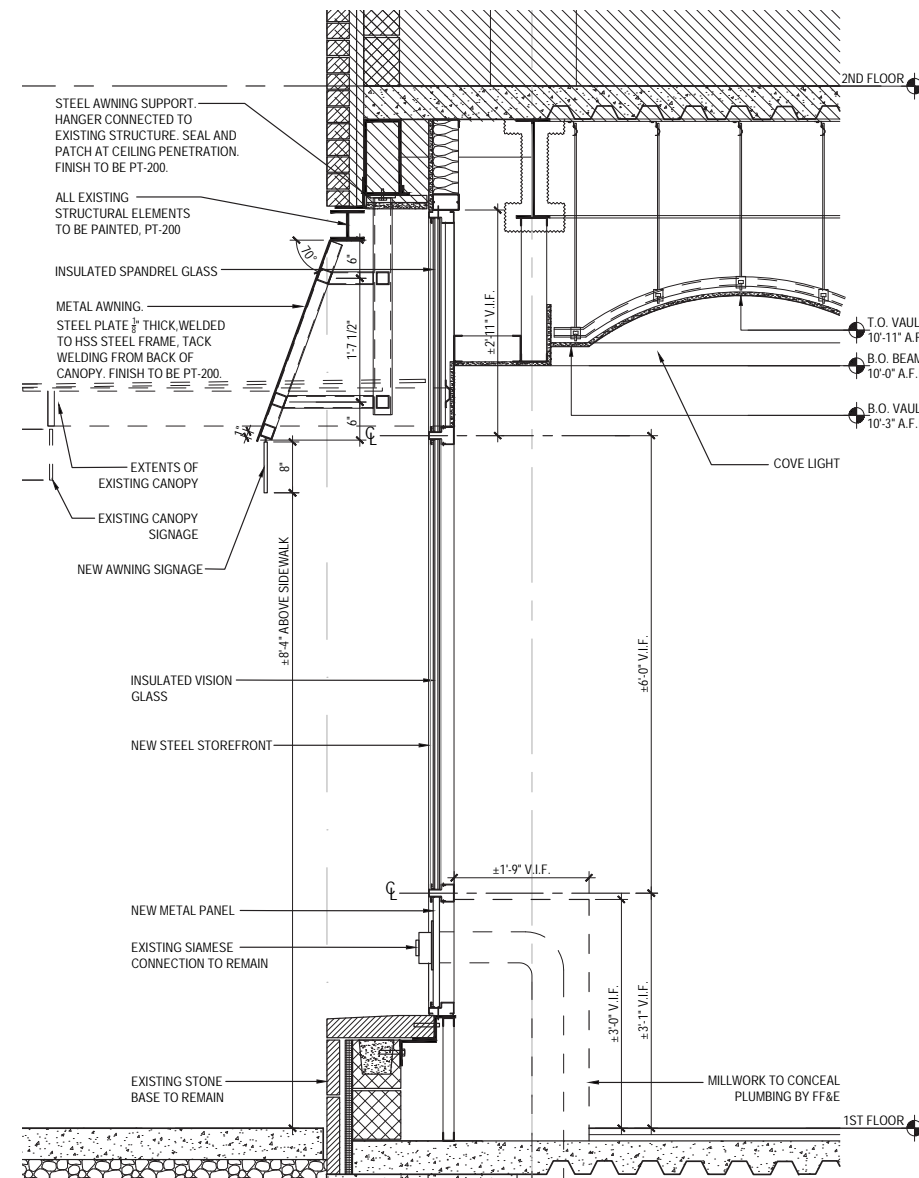
1 PARTIAL ELEVATION @ WEST 12TH ST. WITHOUT AWNING
 SCALE: 1/8" = 1'-0"



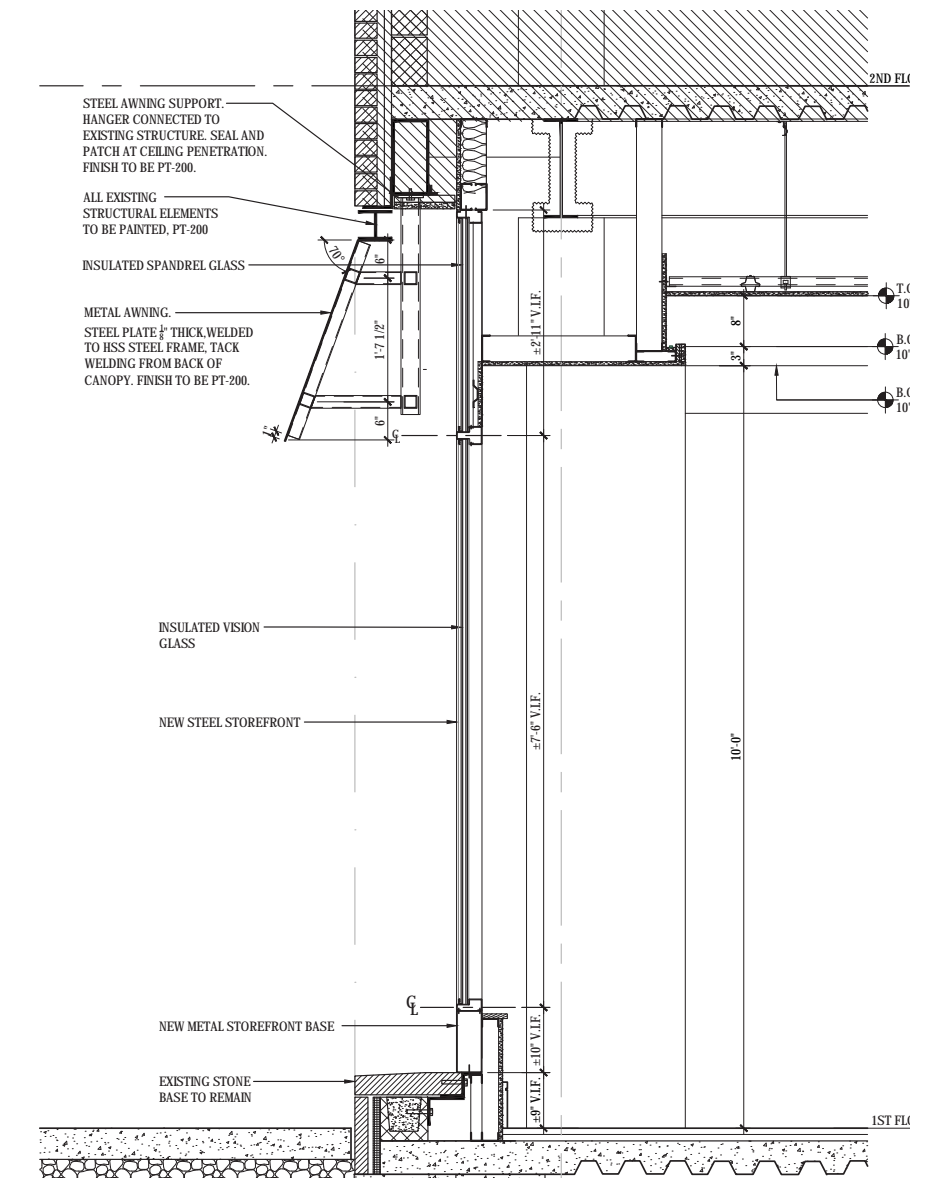
KEY ELEVATIONS



3 WALL SECTION @ INTAKE GRILLE
SCALE: 3/8" = 1'-0"



2 WALL SECTION @ SIAMESE CONNECTION
SCALE: 3/8" = 1'-0"



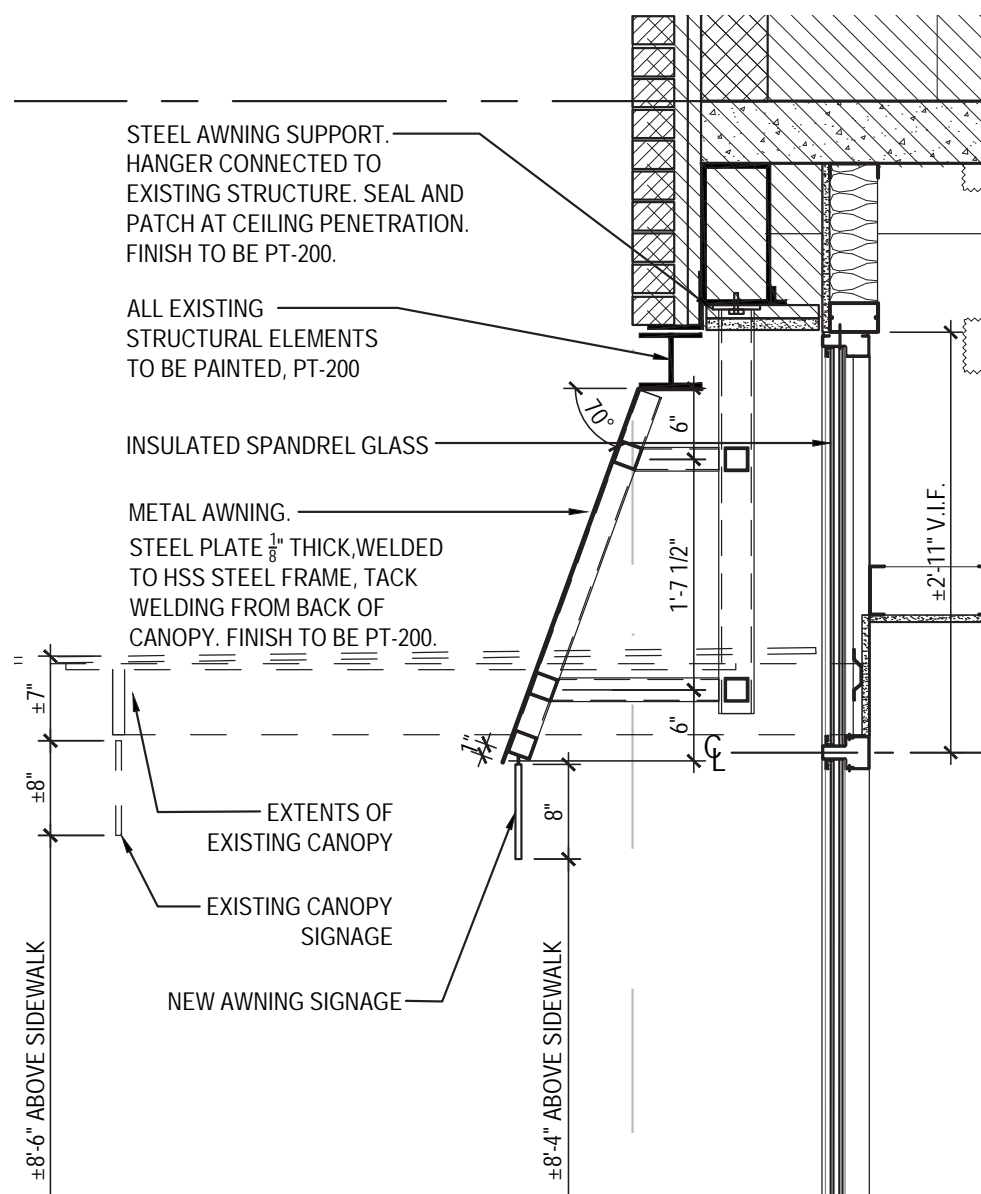
1 WALL SECTION @ STOREFRONT (TYP.)
SCALE: 3/8" = 1'-0"



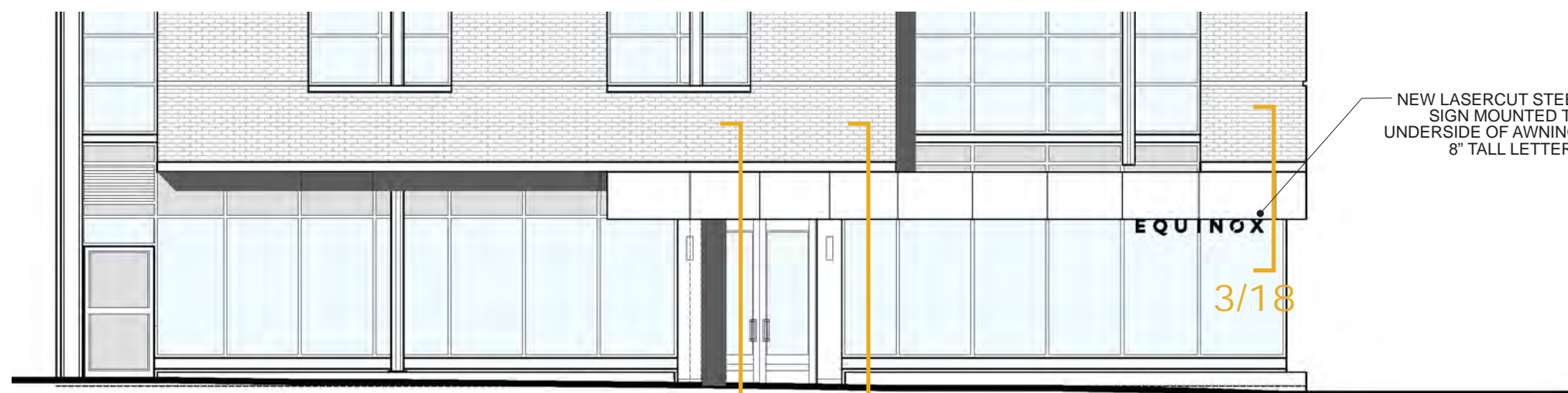
KEY PLAN



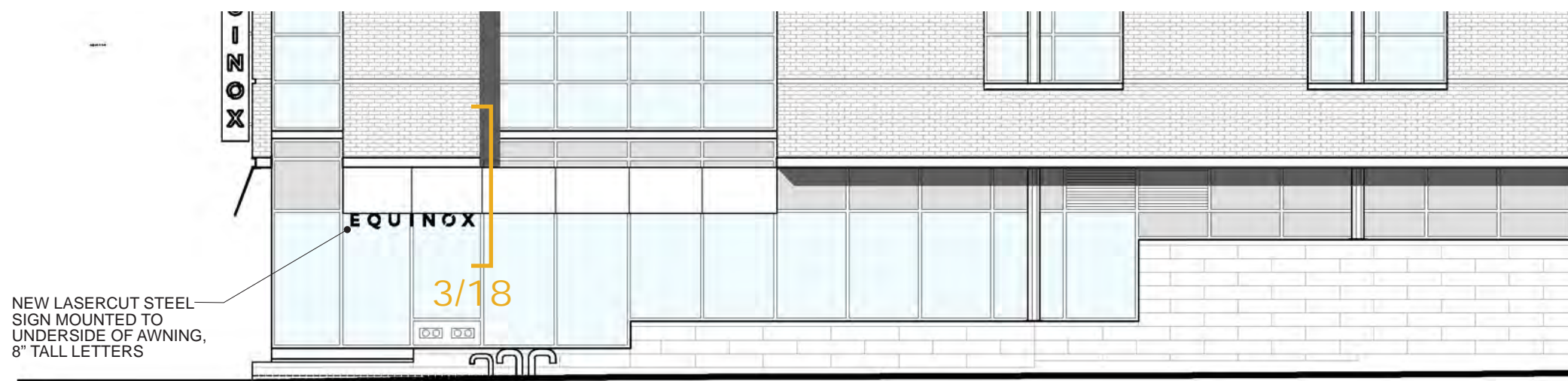
AWNING PRECEDENT - SATURDAYS NYC | OSAKA, JP | GENERAL DESIGN CO. LTD



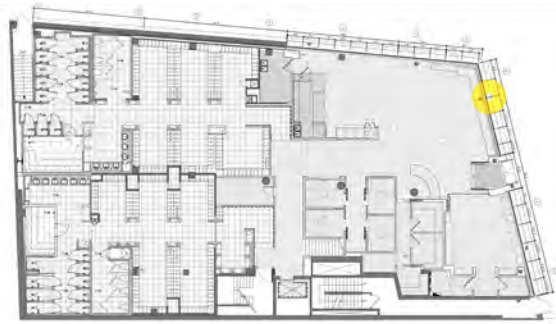
3 SECTION DETAIL @ AWNING
SCALE: 3/4" = 1'-0"



2 PARTIAL ELEVATION @ GREENWICH AVE WITH AWNING
SCALE: 1/8" = 1'-0"



1 PARTIAL ELEVATION @ WEST 12TH ST. WITH AWNING
SCALE: 1/8" = 1'-0"

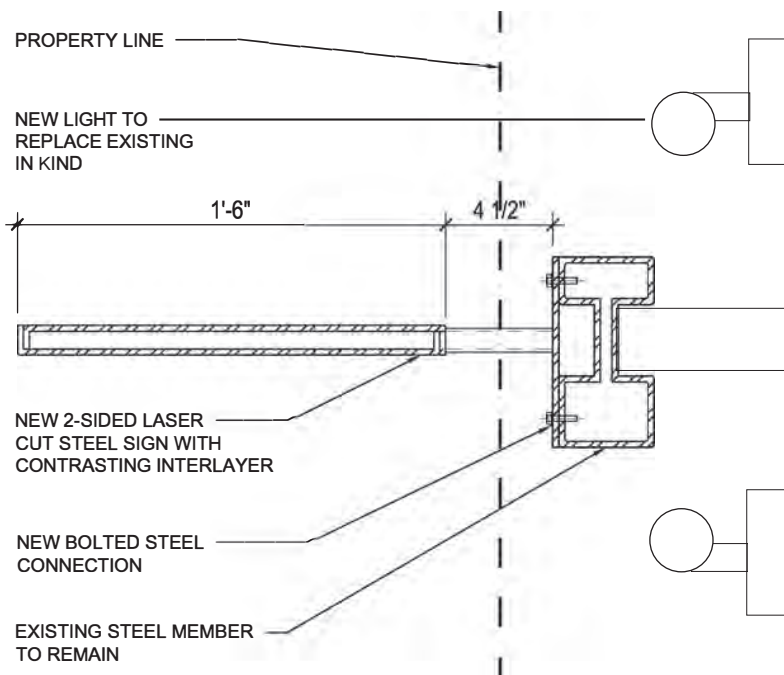


KEY PLAN

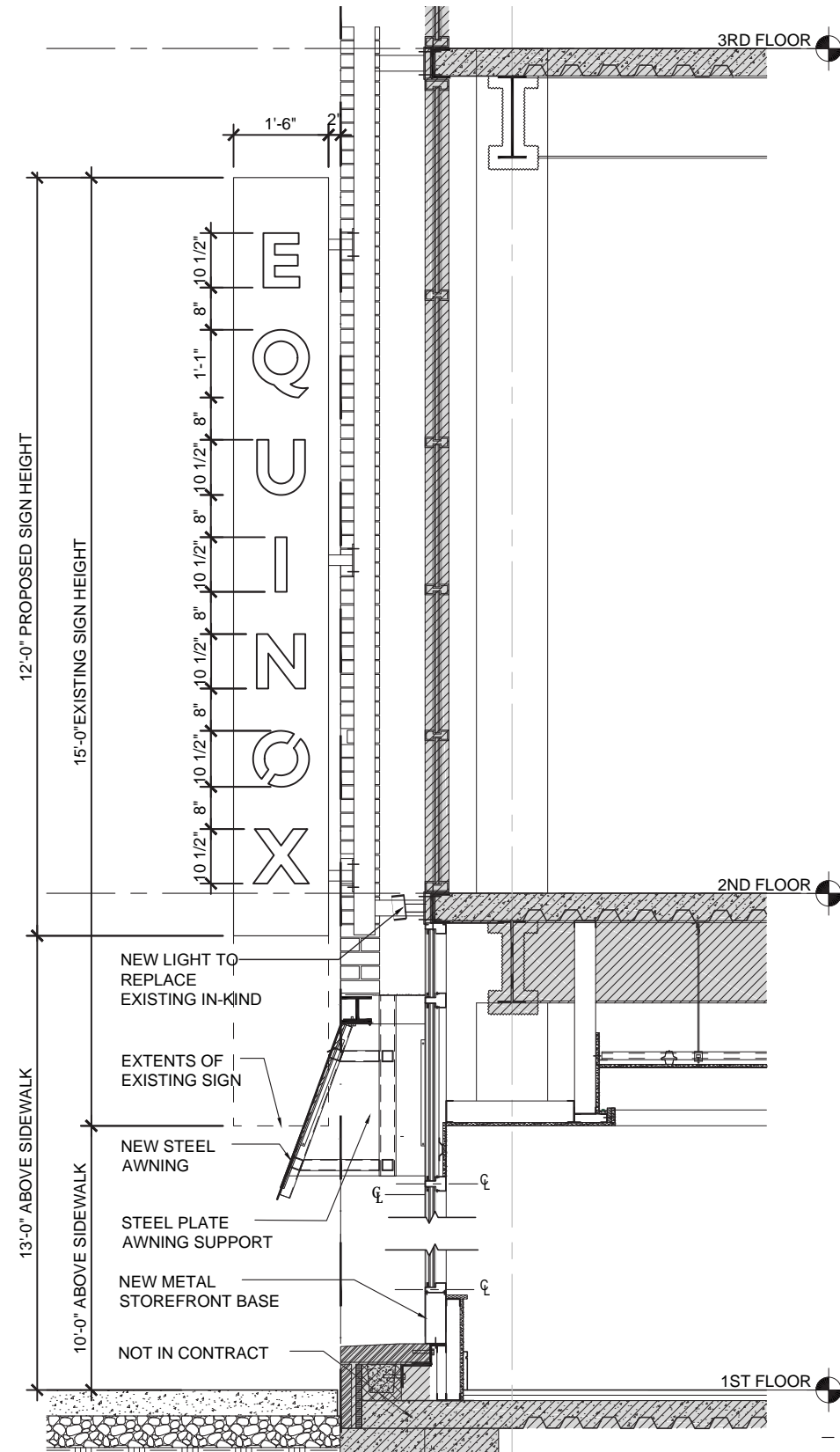
HK USA Lighting Group

FIXTURE: ZX16-SOI
 BASE: CB5-5 SURFACE MOUNT BOX
 FINISH: BRONZE

3 NEW SIGNAGE LIGHT FIXTURE



2 PLAN DETAIL @ SIGNAGE CONNECTION
 SCALE: 1-1/2" = 1'-0"



1 WALL SECTION @ BLADE SIGN
 SCALE: 3/8" = 1'-0"



KEY ELEVATION



SCOPE OF WORK PHOTO DIAGRAM



SIGNAGE PRECEDENTS - STENCIL TEXT ON METAL SHEET



GREENWICH AVENUE - PROPOSED

PT-1A

PT-1A

PT-1A

PT-1A

PT-1A

PT-1B

ST-1

PT-1B



WEST 12TH STREET ELEVATION - PROPOSED

PT-1A

PT-1A

PT-1A

PT-1A

PT-1A

PT-1A

PT-1B

PT-1A

PT-1B

ST-1

LEGEND

PT-1A PPG BLACK PAINT ON EXISTING STEEL OR ALUMINUM.

NOTES:
All existing metal surfaces will be cleaned and defects will be corrected prior to application. All surface contamination and oils will be removed, and wash with solvent. One coat primer and two top coats will be applied to existing metal surfaces by hand.

PT-1B PPG BLACK PAINT ON NEW METAL FOR FACTORY-APPLIED PAINT.

NOTES:
All metal surfaces will be cleaned and defects will be corrected prior to application. All surface contamination and oils will be removed, and wash with solvent. One coat primer and two top coats will be applied to metal surfaces by hand.

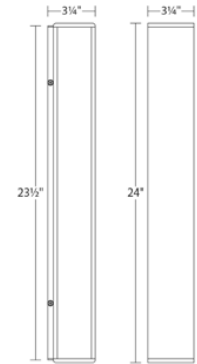
ST-1 STOREFRONT

Appendix
Lighting Specifications



sideways 24" LED Sconce

7254.72-WL



DIMENSIONS

Height	24"
Width	3.25"
Extension	3.25"
Minimum Extension	3.25"
Maximum Extension	3.25"
Switch Type	N/A"
Fixture Weight	5 lbs.

ELECTRICAL SPECS

Bulb Type	Integral LED
Bulb Quantity	0
Bulb Included?	Yes
Wattage	31
Initial Lumens	1730
Input Voltage	120VAC
CCT	3000K
CRI	80
Power Supply Type	Transformer
Power Supply Quantity	1
Power Supply Location	Outlet Box
Dimming Type	ELV

SHIPPING

Carton 1 L x W x H	28" x 8" x 8"
Carton 1 GW	6 lbs.

SHADE 1

Color	Textured Bronze
Material	Aluminum
Height	N/A

SHADE 2

Quantity	1
Color	Optical
Material	Acrylic

AVAILABLE FINISHES

- Textured Bronze (.72)
- Textured Gray (.74)
- Textured White (.98)

GENERAL LISTINGS

- cETL
- cUL
- ADA
- Wet Location

PROJECT

QUANTITY

NOTES



ZX16-SOI

Area Accent ▲ ZX16 Series



LIGHTING SUPPLIER TO CONFIRM TRIM FINISH PRIOR TO ORDERING.

Characteristics

Listed

Standard

Soraa compatible

• Wet/Dry location rated. • Swivel Stem | facilitates 355° deg. rotation for aiming precision on any installation plane. • Integral Thermal dissipation for the SORAA MR16 LED in a compact, aesthetic fixture. US patented. • Reduces LED junction temperature by a tested 20-30°C (68-86°F) • For lamp selections, please refer to <http://www.soraa.com/products/specs-GU5.3-US>

Technical Data

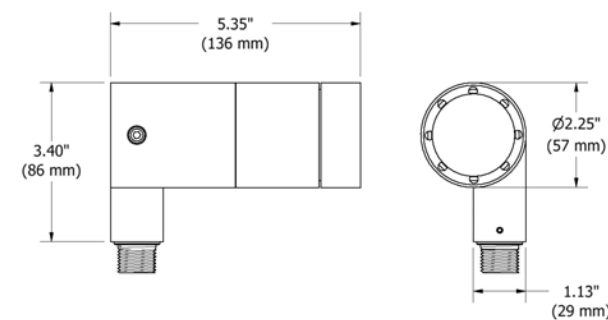
Material	Housing/Cap/Stem - Machined silicone magnesium aluminum alloy (6061-T6) resistant to corrosion Stainless steel (SS304) hardware
Lamp	Soraa MR16
Dimmability	MLV, ELV
Hoods	A, B, C
Socket	Bi-pin, GX5.3
Voltage	12V
Wattage	Max. SORAA 11.5W
Color Temp	2.7K, 3K, 4K
Power Supply	Requires remote step down transformer

PROJECT _____

FIXTURE TYPE _____

Ordering Guide

Series	ZX16-SOI
Hoods	A B C
Glare Shields (optional)	GSL GSA GSS CGSL CGSA CGSS
Voltage	12V
Wattage	Max. SORAA 11.5W
Lamp	Soraa MR16
Socket	Bi-pin GX5.3
Color Temp	2.7K 3K 4K
Stem (optional)	FSS
Finish	BK (black) BZ (bronze) WT (white) ABK (anodized black) ACL (anodized clear) CC (custom)



HK USA Lighting Group 3529 Old Conejo Road #118 Newbury Park CA 91320 TEL 805 480 4881 FAX 805 480 4811 sales@hklightinggroup.com

SORAA
SIMPLY PERFECT LIGHT

MR16 7.5W



OUTPUT RANGE: VIVID SERIES 390 - 455 lumen

OUTPUT RANGE: BRILLIANT SERIES 475 - 525 lumen

BEAM ANGLE RANGE 10°, 25°, 36°

COLOR TEMPERATURE RANGE 2700K, 3000K, 4000K

APPLICATION Halogen replacement for indoor and outdoor applications



POINT SOURCE OPTICS

Exceptional beam control enables unique 10° narrow spot and smooth uniform beams

Single light source, single crisp shadow

VP₃ VIVID COLOR AND VP₃ NATURAL WHITE

VIVID series provides accurate color rendering across the visible spectrum from 400nm to 700nm, with CRI/95, R9/95, Rf/90, Rg/100

Whiteness rendering matches or exceeds that of halogen and incandescent sources at 2700K and 3000K

ENERGY EFFICIENCY AND LONG LIFE

85% more energy efficient than standard halogen lamps

Typical payback of one year or less

Rated lifetime to L70: 35,000hrs

Warranty: 3yrs or 25,000hrs whichever comes first.

Detailed warranty information available at soraa.com/resources/legal

CERTIFICATIONS

JA8-2016-E, UL/CUL Class 2 and non-Class 2, FCC Title 47 Part 15B, RoHS, CE



GENERAL SPECIFICATIONS

Form Factor	Operating Temperature	Electrical	Dimming and Flicker
Width: 50.1mm (1.97")	Minimum: -40°C (ambient)	Wattage: 7.5W	Dimmable to <20%
Height: 45.5mm (1.79")	Typical: 85°C - 95°C (base)	Power factor: 0.92	Flicker Index: 0.02
Weight: 47g	Maximum: 100°C (base)	Voltage: 12V +/- 1.2V	Percent Flicker: 5%*
		Frequency: 50/60Hz	

*These Soraa lamps are certified to California's demanding JA8 standard, which requires <30% flicker

HIGHLY COMPATIBLE

Narrow spot compatible with Soraa SNAP System accessories

Geometrically compatible with standard fixtures and suitable for damp locations

This lamp is suitable for use in fully enclosed fixtures, subject to the maximum heatsink temperature limits stated in this data sheet. A list of qualified enclosed fixtures can be found at www.soraa.com/resources

Works with trailing edge and leading edge phase cut dimmers, 12V AC magnetic and electronic transformers and 12V DC transformers (see www.soraa.com/resources)

INTENDED USE AND APPLICATIONS

Intended for use in MR16 compatible recessed downlights, track lighting and other indoor and outdoor applications

Soraa lamps are designed to safely turn down in any thermal environment not conducive to minimum airflow or proper ventilation

SPECIFICATIONS BY MODEL NUMBER* SORAA LED MR16 7.5W

Model #	Product Code	CCT (K)	Beam Angle	CBCP (Cd)	Halogen Equivalent	Total Flux (Lm)	Efficacy (Lm/W)	McA	JA8-2016-E	SNAP
VIVID SERIES										
SM16-07-10D-927-03	00919	2700	10	5710	50	390	52	3	YES	YES
SM16-07-25D-927-03	00931	2700	25	2260	50	410	55	3	YES	-
SM16-07-36D-927-03	00943	2700	36	1070	50	410	55	3	YES	-
SM16-07-10D-930-03	00923	3000	10	6000	50	410	55	3	YES	YES
→ SM16-07-25D-930-03	00935	3000	25	2400	50	435	58	3	YES	-
SM16-07-36D-930-03	00947	3000	36	1130	50	435	58	3	YES	-
SM16-07-10D-940-03	00925	4000	10	6290	50	430	57	4	YES	YES
SM16-07-25D-940-03	00937	4000	25	2510	50	455	61	4	YES	-
SM16-07-36D-940-03	00949	4000	36	1190	50	455	61	4	YES	-
BRILLIANT SERIES										
SM16-07-10D-827-03	00917	2700	10	6950	50	475	63	3	NA	YES
SM16-07-25D-827-03	00929	2700	25	2760	50	500	67	3	NA	-
SM16-07-36D-827-03	00941	2700	36	1310	50	500	67	3	NA	-
SM16-07-10D-830-03	00921	3000	10	7320	50	500	67	3	NA	YES
SM16-07-25D-830-03	00933	3000	25	2900	50	525	70	3	NA	-
SM16-07-36D-830-03	00945	3000	36	1370	50	525	70	3	NA	-

CCT: Correlated Color Temperature **McA**: White Point Accuracy in McA step **SNAP**: SORAA SNAP System Compatible
*Specifications are at stable warm operating conditions (25°C ambient)

CB5-5

Accessories ▾ Surface Mount Boxes

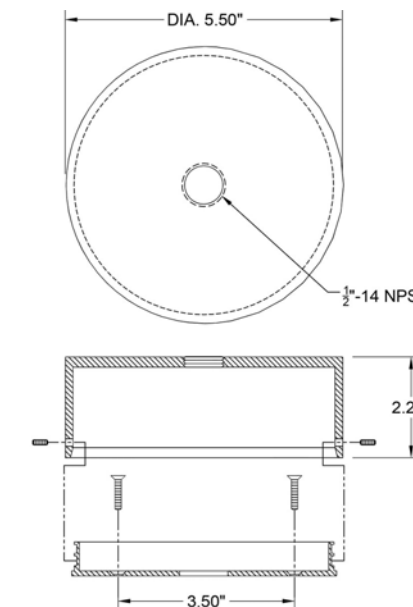


Characteristics

A versatile surface mount box for wire connection and compartment for compact, electronic transformers, or a small sized ballast

Technical Data

Features 1/2" NPS threaded female fitting
Power feeds from the back
Material Housing/Cap/Stem - Machined silicone magnesium aluminum alloy (6061-T6) resistant to corrosion



PROJECT _____

FIXTURE TYPE _____

Ordering Guide

Series	→ CB5-5
Finish	→ BK (black) BZ (bronze) WT (white) ABK (anodized black) ACL (anodized clear) CC (custom)

HATCH

AC LED Drivers
15/30/60 WATTS

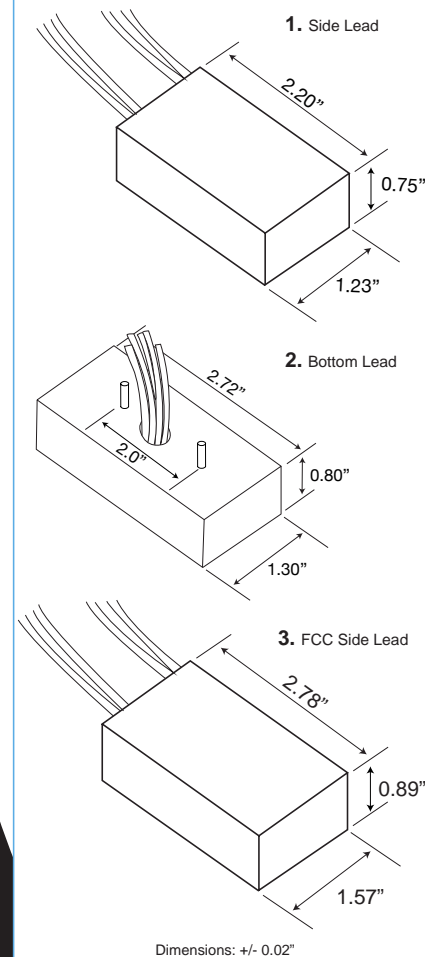
ELECTRONIC RS LED SERIES

No Minimum Load - Full Range Dimming

NEW RS LED SERIES



PHYSICAL DIMENSIONS



PACKING INFORMATION

Carton Quantity: 100 count
Carton Weight: 9lbs 15.2oz
Unit Weight: 2.4oz

SPECIFICATIONS

Input Voltage	120VAC, 230VAC, 277VAC
Input Frequency	50/60Hz
Nominal Output Voltage	12VAC
Power Factor	0.90
Ambient Temp.	-20° - +50°C
Max. Case Temp. (Tc)	90°C
Class 2	Yes (Isolated Secondary)
Dimming	Yes
Short Circuit Protection	Yes
Case Material	Aluminum

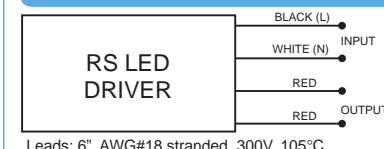
FEATURES

- 1) Suitable for use with AC LED
- 2) Suitable for use with Halogen
- 3) Broader lamp compatibility
- 4) Broader dimmer compatibility
- 5) Recommended ELV dimming
- 6) Now available in 230V & 277V
- 7) For use in dry and damp locations

REGULATORY APPROVALS

- RoHS Compliant
- UL8750 Compliant
- EMC: Meets FCC47 CFR Part 15 (Class B) consumer limits — FCC model only
- Surge: Meets NEMA SSL1-2010 Non-roadway 2.5kV

WIRING SPECIFICATIONS



Max Watts	Input Volts	Input Amps	Nominal Output Volts	Max Output Amps	Case Style	Hatch Part No.
15	120	0.15	12	1.30	1	RS12-15M-LED
					2	RS12-15BF-LED
	230	0.08	12	1.30	1	RS12-15M-LED-230
					2	RS12-15BF-LED-230
	277	0.07	12	1.30	1	RS12-15M-LED-277
					2	RS12-15BF-LED-277
30	120	0.30	12	2.50	1	RS12-30M-LED
					2	RS12-30BF-LED
	230	0.16	12	2.50	1	RS12-30M-LED-230
					2	RS12-30BF-LED-230
	277	0.13	12	2.50	1	RS12-30M-LED-277
					2	RS12-30BF-LED-277
60	120	0.60	12	5.00	1	RS12-60M-LED
					2	RS12-60BF-LED
	230	0.31	12	5.00	1	RS12-60M-LED-230
					2	RS12-60BF-LED-230
	277	0.26	12	5.00	1	RS12-60M-LED-277
					2	RS12-60BF-LED-277
FCC Models						
15	120	0.15	12	1.30	3	*RS12-15M-LED-FCC
30	120	0.30	12	2.50	3	*RS12-30M-LED-FCC
60	120	0.60	12	5.00	3	*RS12-60M-LED-FCC

*FCC Class B

Please refer to LED product manufacturer data sheets for compatibility with the RS LED products. Hatch does not perform compatibility and/or dimmer compatibility testing with other manufacturers LED lamp products. See lamp manufacturers listings of approval of their products with our drivers.